

DECO HEAVY-DUTY ADJUSTABLE ANCHORS

Deco Heavy-Duty Adjustable Anchor's durable, heavy-duty anchor studs and couplings are machined from mill-tested, C1144 (A-311) stress-proof, cold-rolled steel having a minimum tensile strength of 115,000 lbs. psi and yield strength of 100,000 lbs. psi. Special orders from alloy steel are available with a yield strength of 130,000 lbs. psi.

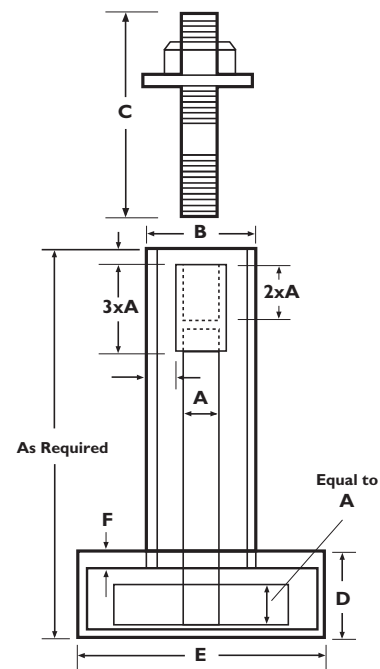
DECO HEAVY-DUTY ADJUSTABLE Anchors are also available in stainless or galvanized steel for specific industrial applications. To best meet our customers' needs, Deco also offers specialty steels and coatings.

Multiple anchors may be installed in sole plates to customers' specifications. Stepped couplings are available for jobs that require fastening studs and lower studs of different diameters.

Leveling plates of any size may be specified on Deco Heavy-Duty Adjustable Anchors.



DIMENSIONS																			
Bolt Diameter	A	1/2"	5/8"	3/4"	7/8"	1"	1 1/8"	1 1/4"	1 3/8"	1 1/2"	1 3/4"	2"	2 1/4"	2 1/2"	2 3/4"	3"			
Threads Per Inch		13	11	10	9	8	7	7	6	6	5	4 1/2	4 1/2	4	4	4			
Tube Diameter	B	2"	2"	2 1/2"	2 1/2"	2 3/4"	3"	3"	3"	3"	3 1/2"	4"	4 1/2"	5"	5"	5 1/2"			
Fastening Stud <i>with 1 nut and washer</i>	C	Length to Specifications																	
Box Height	D	1 1/4"	1 1/4"	1 1/2"	1 1/2"	1 3/4"	2 1/4"	2 1/4"	2 1/4"	2 1/4"	2 3/4"	2 3/4"	3 1/4"	3 3/4"	3 3/4"	4 3/4"			
Box Square	E	3 3/4	3 3/4	4 3/4	4 3/4	5 5/4	5 5/4	5 5/4	5 5/4	5 5/4	5 5/4	5 5/4	5 5/4	6 1/4	7 1/4	7 1/4	8 1/4	9 1/4	9 1/4
Plate Thickness	F	3/8	3/8	3/8	3/8	3/8	3/8	3/8	3/8	3/8	1/2	1/2	1/2	1/2	1/2	1/2			





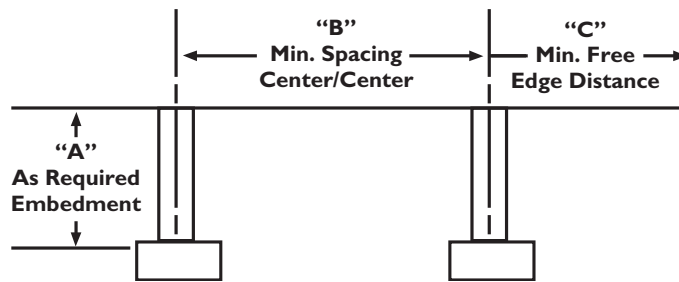
DECO HEAVY-DUTY ADJUSTABLE ANCHORS PERFORMANCE

- Safe working loads are based on a 4,000 lbs. psi concrete compressive strength at 28 days and a safety factor of 4 against predicted ultimate loads. Safe working loads are for anchors loaded in a static condition. For a dynamic loading condition, reduce loads by a minimum of 50%.
- Shear safe working loads can only be obtained by fully grouting the annular space of the sleeve tube.
- Allowable minimum center-to-center spacing of 12 times anchor diameter is permissible using a reduced safe working load of 50%.
- Reduced minimum free edge distance spacing of 1/2 of minimum free edge distance "C" is permissible when shear reinforcement is supplied per ACI-318-95 Section II.7 Shear-Friction.

5 Anchor Bolt Combined Stress Interaction Formula:

$$\frac{\text{Actual Tension Applied}}{\text{Safe Working Load Allowable Pullout}} + \frac{\text{Actual Shear Applied}}{\text{Safe Working Load Allowable Shear}} \leq 1$$

6



ANCHOR SIZE	1/2"	5/8"	3/4"	7/8"	1"	1 1/8"	1 1/4"	1 3/8"	1 1/2"	1 3/4"	2"	2 1/4"	2 1/2"	2 3/4"	3"
Pullout Safe Working Load (lbs.) (1)	4,047	6,441	9,519	13,167	17,271	21,746	27,617	32,918	40,043	54,122	71,193	92,568	113,972	140,619	170,060
Shear Safe Working Load (lbs.) (1) (2)	1,616	2,576	3,808	5,259	6,897	8,693	11,036	13,151	16,001	21,635	28,450	36,986	45,533	56,182	67,949
As Required Embedment ("A") (6)	9"	9"	9"	12"	12"	15"	15"	18"	18"	24"	24"	30"	30"	36"	42"
Minimum Spacing Center/Center ("B") (6)	11"	14"	17"	21"	24"	27"	30"	33"	37"	43"	49"	56"	62"	69"	76"
Minimum Free Edge Distance ("C") (6)	8"	10"	12"	14"	16"	18"	20"	21 1/2"	24"	27 1/2"	31"	35"	39"	43"	48"
Minimum Spacing Center/Center w/Reduced Safe Working Load (3)	6"	7 1/2"	9"	10 1/2"	12"	13 1/2"	15"	16 1/2"	18"	21"	24"	27"	30"	33"	36"
Min. Free Edge Distance w/Shear Reinforcement Per ACI-318 (4)	3"	3 1/2"	4"	4 1/2"	5"	6"	6 1/2"	7"	8"	9"	10 1/2"	11 1/2"	13"	14"	15"

DECO: THE INDUSTRY STANDARD

For more than 50 years, Deco Manufacturing has delivered industrial products that stand the test of time. Our work is rock solid — and so is our reputation. When it comes to your manufacturing needs, trust Deco Manufacturing to get the job done.

Call right now and we'll give you an estimate or place your order in minutes.